

## GRT655L

Capacity: 51 t

Main boom: 10,8 m - 43,0 m

Maximum boom extension: 7,9 m - 13,7 m

Maximum tip height: 59,7 m

## GRT655

Capacity: 51 t

Main boom: 10,6 m - 34,8 m

Maximum boom extension: 7,9 m - 13,7 m

Maximum tip height: 51,8 m



## Benefits

### Unmatched capacity

- 51 t rated capacity
- Competitive load charts in this tonnage class (do more for less)

### Optimized productivity

- GRT655L offers the user 8,3 m more main boom length than the closest competitive model for better reach and greater versatility than any other model in its class.
- GRT655L max tip height (main boom and extension): 59,7 m
- GRT655 max tip height (main boom and extension): 51,8 m
- 5552 kg permissible line pull
- Four modes of steering (improves maneuvering in tight areas)

### Outstanding versatility and durability

- 6,8 m outrigger spread with three settings (get closer to the load)
- Designed for the worldwide market

### Four or five-section, modular formed boom

- The GRT655L/GRT655 improves lateral strength of all boom sections by utilizing the next generation in Grove's formed boom technology
- Large easy-access grease-less wear pads provide superior boom alignment when telescoping and allow an excellent transition of weights between sections
- Swingaway alignment device for smooth set up

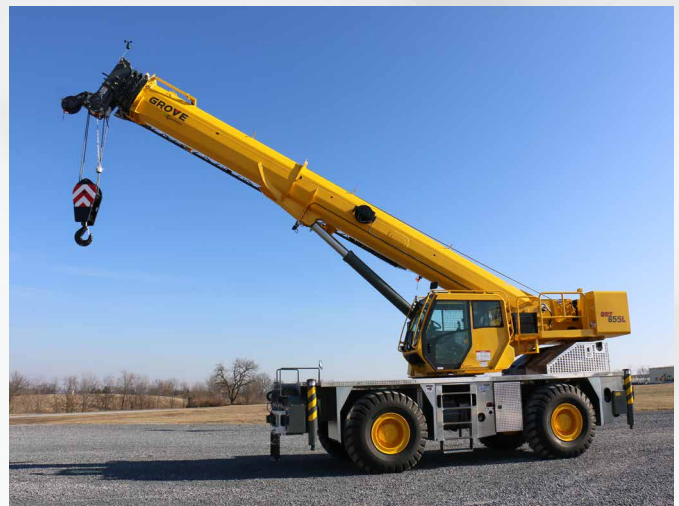
### Optional extensions

- 7,9 m - 13,7 m manual telescopic swingaway extension, offsettable at 0°, 15° and 30°

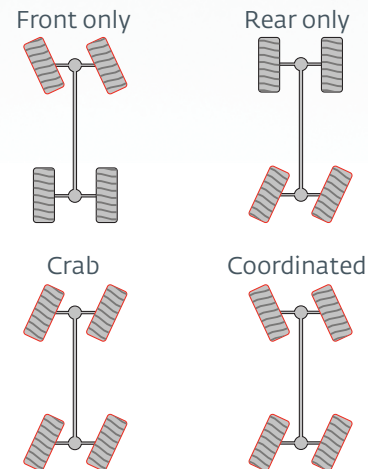


### Inverted outrigger jacks

- Three position settings: 0%, 50% and 100%
- Polymer outrigger floats: 508 mm in diameter
- Outrigger Monitoring System



### Steering modes



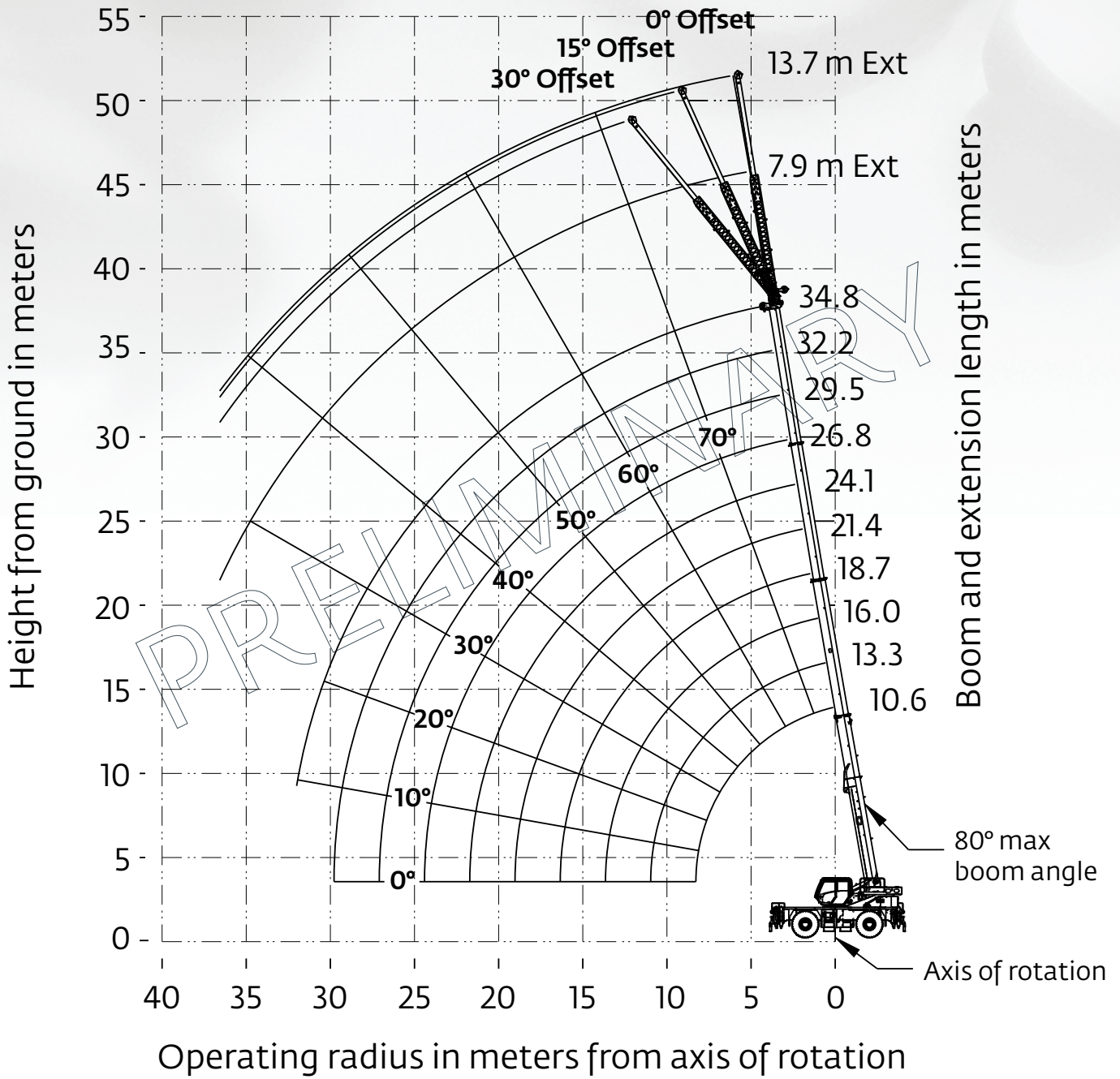
### Crane Control System (CCS)

- Hardware and software that integrates the Crane Control with the Rated Capacity Limiter (RCL) to create one system
- Tilting, full color, high resolution Operating and RCL displays for improved visibility
- Designed for maximum operator comfort
- Graphical setup wizard makes startup quick and easy



# GRT655 - PRELIMINARY - Working range

Metric 85%



# GRT655 -PRELIMINARY - Load chart

Metric 85%



10,6 m - 34,8 m



5580 kg



100%



360°



Metric tons (t)

Meters	Main boom length in meters									
	10.6	13.3	16	18.7	21.4	24.1	26.8	29.5	32.2	34.8
2.5	51,000*									
3	40,625	30,100	30,100	30,100	30,100					
3.5	37,350	30,100	30,100	30,100	30,100	26,200				
4	34,550	30,100	30,100	29,950	29,100	25,050				
4.5	31,925	30,100	30,100	29,700	27,625	23,375	19,150	15,100		
5	29,725	28,750	28,650	28,200	26,000	22,000	18,225	15,100		
6	25,475	25,600	25,225	24,775	22,700	19,325	16,050	15,100	12,450	9,840
7	21,075	22,725	22,575	22,200	20,225	17,200	14,300	13,700	12,325	9,840
8		19,975	20,125	19,950	18,025	15,350	12,775	12,275	11,800	9,840
9		17,000	17,175	17,250	16,225	13,800	11,475	11,025	10,650	9,840
10		13,800	14,175	14,250	14,300	12,550	10,400	9,990	9,675	9,255
12			10,150	10,300	10,350	10,375	8,660	8,325	8,060	7,805
14				7,805	7,895	7,925	7,350	7,060	6,815	6,610
16				4,900	6,180	6,245	6,260	6,045	5,830	5,635
18					4,945	5,015	5,060	5,075	5,025	4,865
20						4,060	4,110	4,145	4,155	4,165
22							3,365	3,400	3,425	3,430
24							2,580	2,795	2,825	2,845
26								2,305	2,330	2,350
28									1,915	1,930
30										1,580
32										1,280

NOTE:

\*Special equipment required to lift this capacity.

# GRT655 -PRELIMINARY - Load chart

Metric 85%



7,9 m - 13,7 m



5580 kg



100%



360°

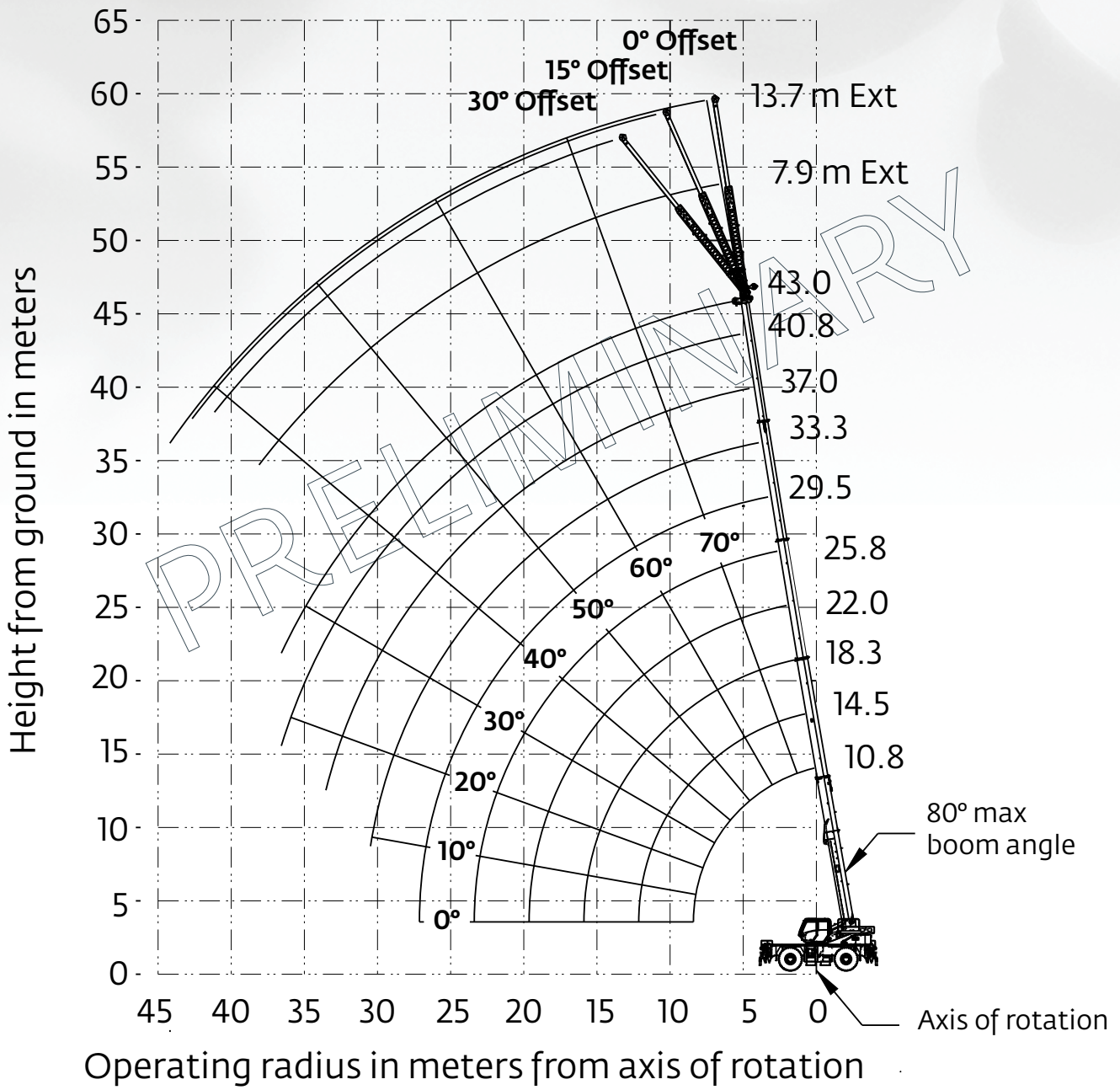


Metric tons (t)

Meters	7,9 m LENGTH			13,7 m LENGTH		
	0° OFFSET	15° OFFSET	30° OFFSET	0° OFFSET	15° OFFSET	30° OFFSET
6	5,550					
7	5,550					
8	5,550	4,280		3,750		
9	5,550	4,105	3,040	3,525		
10	5,550	3,950	2,980	3,330		
12	5,435	3,665	2,835	2,995	2,230	
14	4,895	3,420	2,715	2,720	2,100	1,690
16	4,425	3,215	2,610	2,495	1,985	1,625
18	4,040	3,030	2,515	2,300	1,885	1,560
20	3,720	2,880	2,430	2,140	1,795	1,505
22	3,445	2,740	2,355	1,995	1,715	1,455
24	2,885	2,615	2,290	1,870	1,645	1,410
26	2,390	2,505	2,230	1,765	1,575	1,370
28	1,980	2,110	2,185	1,670	1,510	1,335
30	1,630	1,740	1,820	1,585	1,455	1,300
32	1,330	1,425	1,485	1,505	1,405	1,275
34	1,070	1,145	1,190	1,405	1,360	1,250
36	0,845	0,905	0,930	1,175	1,305	1,230
38	0,650	0,685		0,970	1,080	1,160
40				0,790	0,880	0,940
42				0,630	0,700	

# GRT655L -PRELIMINARY - Working range

Metric 85%



# GRT655L -PRELIMINARY - Load chart

Metric 85%



10,8 m - 43,0 m



5580 kg



100%



360°



Metric tons (t)

Meters	Main boom length in meters									
	10.8	14.5	18.3	22	25.8	29.5	33.3	37	40.8	43
2.5	51,000*									
3	40,175	19,050	18,800	18,325						
3.5	36,900	19,050	18,800	18,275						
4	34,100	19,050	18,800	18,275						
4.5	31,500	19,050	18,800	18,275	17,625	15,950				
5	29,325	19,050	18,800	18,275	17,300	15,475				
6	25,125	19,050	18,800	18,275	16,500	14,350	12,675	9,930		
7	20,900	19,050	18,800	17,175	15,350	13,250	11,850	9,930		
8	12,825	18,600	18,475	16,025	14,250	12,225	11,000	9,745	7,980	6,985
9		17,225	17,425	15,000	13,300	11,300	10,225	9,255	7,980	6,985
10		14,100	14,325	14,125	12,500	10,525	9,450	8,725	7,790	6,985
12		5,470	10,325	10,425	10,500	9,230	7,900	7,575	7,105	6,705
14			7,755	7,920	7,985	7,950	6,660	6,410	6,210	6,040
16				6,175	6,260	6,305	5,690	5,465	5,285	5,205
18				4,910	5,025	5,080	4,890	4,685	4,540	4,465
20					4,050	4,125	4,155	4,055	3,910	3,840
22					3,290	3,365	3,410	3,430	3,385	3,315
24						2,745	2,800	2,830	2,840	2,850
26						2,240	2,290	2,330	2,345	2,350
28							1,865	1,905	1,930	1,935
30							1,510	1,545	1,570	1,580
32								1,235	1,260	1,275
34									0,990	1,000
36									0,755	0,765

NOTE:

\*Special equipment required to lift this capacity.

# GRT655L -PRELIMINARY - Load chart

Metric 85%



7,9 m - 13,7 m



5580 kg



100%



360°



Metric tons (t)

Feet	7,9 m LENGTH			13,7 m LENGTH		
	0° OFFSET	15° OFFSET	30° OFFSET	0° OFFSET	15° OFFSET	30° OFFSET
8	3,905					
9	3,905	3,920		2,725		
10	3,905	3,920		2,725		
12	3,905	3,820	2,905	2,725	2,270	
14	3,890	3,500	2,795	2,725	2,165	
16	3,700	3,190	2,695	2,670	2,060	1,655
18	3,355	2,920	2,610	2,500	1,965	1,600
20	3,050	2,690	2,450	2,330	1,880	1,550
22	2,790	2,485	2,285	2,195	1,805	1,505
24	2,565	2,310	2,140	2,065	1,740	1,460
26	2,295	2,145	2,005	1,945	1,675	1,425
28	1,875	2,005	1,885	1,800	1,605	1,385
30	1,515	1,655	1,765	1,680	1,510	1,355
32	1,210	1,330	1,430	1,520	1,420	1,325
34	0,940	1,050	1,130	1,250	1,335	1,260
36	0,710	0,805	0,870	1,015	1,190	1,200
38	0,500	0,585	0,640	0,805	0,960	1,085
40				0,620	0,760	0,865
42					0,575	0,665

